

# Specification for HDDI (PD) & Print (P)

## 36oz Cut Pile Textured Base

---

Construction:	Infinity Tip shear Pile Base
Yarn Content:	Type 6 Nylon
Dye Method:	DigiChrome Injection 76 or 25.6 dpi
Gauge:	1/10th
Width:	12'
Yarn Weight Tufted:	36 oz
Stitch Rate:	13.5 SPI
Primary Backing:	Woven Polypropylene
Secondary Backing:	Woven Polypropylene
Pile Height:	.280"
Total Thickness:	.450"
Pattern Repeat:	TBD

### Performance

---

Flame Resistance:	Passes DOC FF-1-70
Static Control:	Less than 3.5 KV
Flooring Radiant Panel:	Class 1 (ASTM 648)
Smoke Density:	Less than .450 (ASTM E622)
Soil Resistance:	Commercial Anti-Soil Protection
Bleach Guard:	By request

### Warranties

---

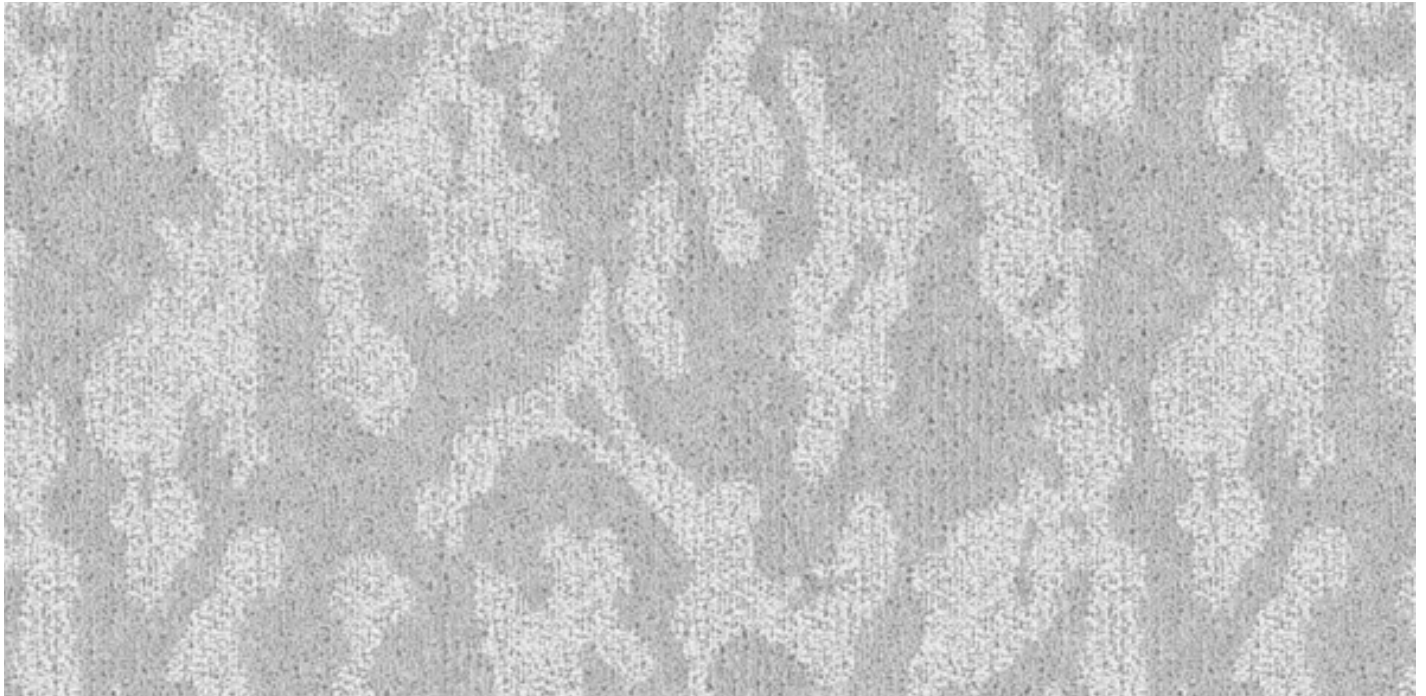
Wear:	10 Year Limited
-------	-----------------

All specifications subject to normal manufacturing tolerances.

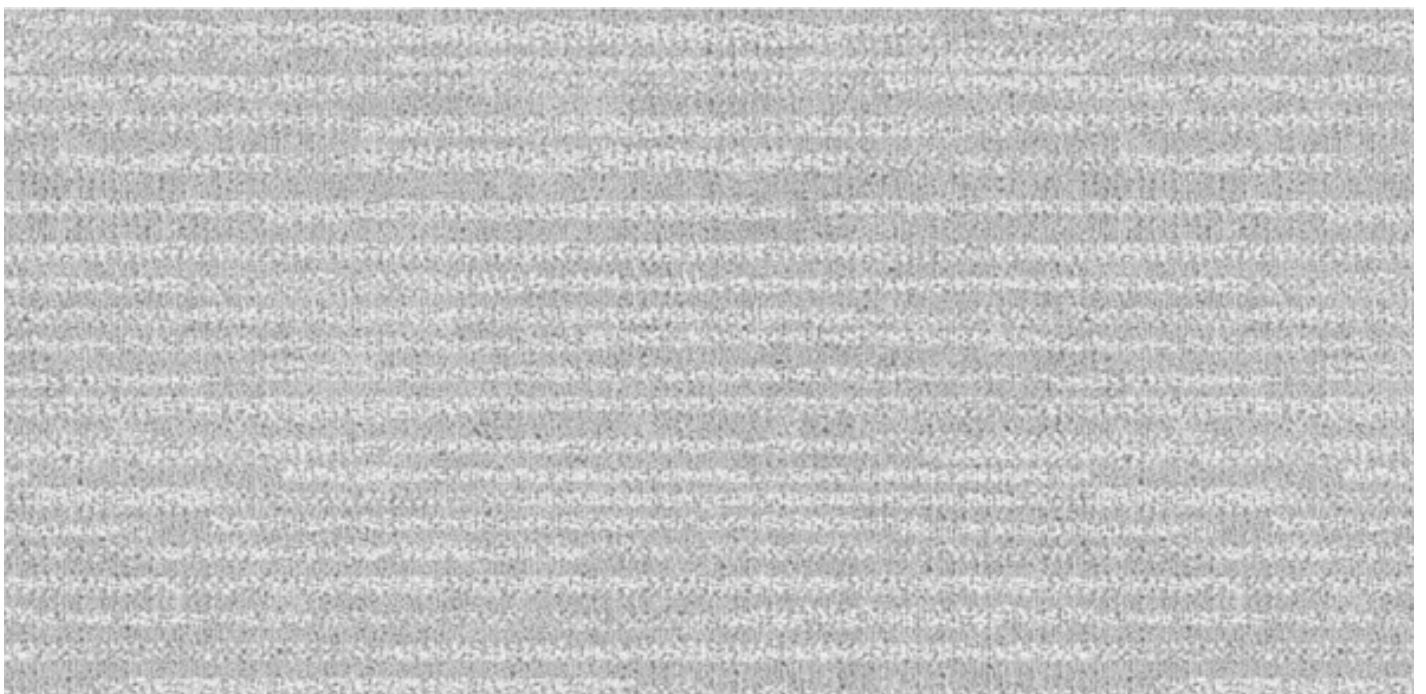
Encore Hospitality flooring products are to be installed in full accordance with Encore's installation instructions and standard trade practices. A program of regular cleaning and maintenance is vital for retaining a high appearance level. Installation plus Care & Maintenance manuals can be downloaded at [www.encorehospitalitycarpet.com](http://www.encorehospitalitycarpet.com)

# Textures

texture options for print carpet



**Clouds Base** 18"x18" repeat



**Stria** 18"x17" repeat